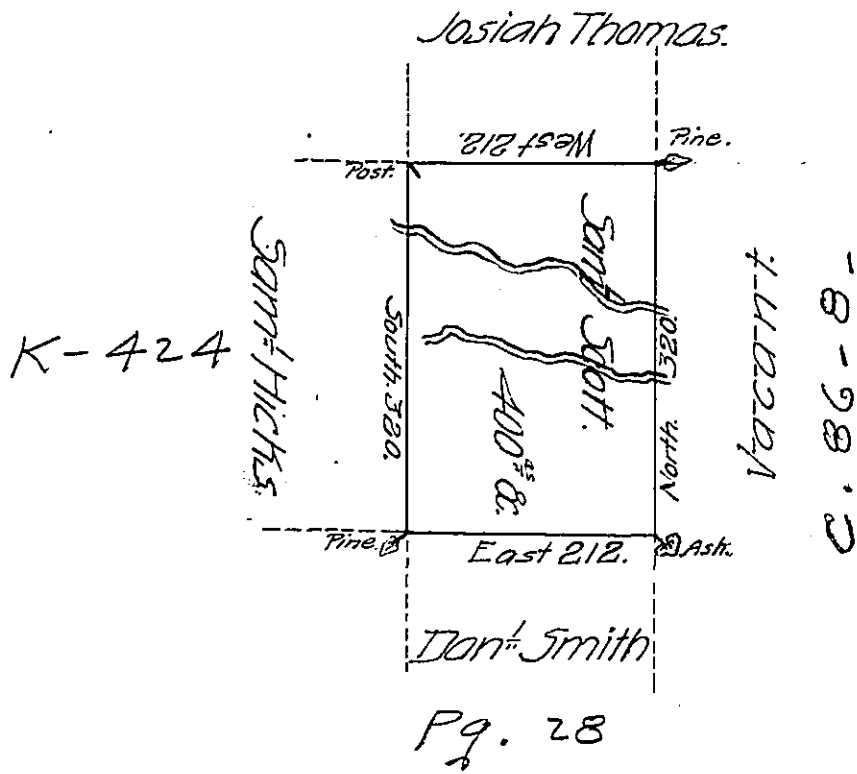


Foster -
Luzerne.



Draft of a tract of land Called— Situate Joining Land Surve^d
 (661) Josiah Thomas & others in the County of Northum^r Contain-
 ing four Hundred acres & Allow^d Surveyed for Sam^l Scott the
 22^d day of Sep^r (661) 1793 by Virtue of a Warrant dated the 2^d day
 of Aug^t 1793.

by W^m Gray D. (661)

To Daniel Bradhead Esq^r
 Surve^r Gen^l

IN TESTIMONY that the above is a copy of the original remaining on file in
 the Department of Internal Affairs of Pennsylvania, made
 conformably to an Act of Assembly approved the 16th day of
 February, 1833, I have hereunto set my Hand and caused
 the Seal of said Department to be affixed at Harrisburg,
 this Seventeenth day of December 1906

Leach D. Brown
 Secretary of Internal Affairs.